

SPECIFICATIONS

System

Oxidant Output: ≤ 1.0 lb/day
Number of Nozzles: 1
Low Volume Nozzle
1 CFM
1 to 2 GPH
Treatment Area
up to 1,000 ft³

Power supply

110 VAC, 20A, 60 Hz

Physical

Aluminum Powder Coated with TGIC polyester
Dimensions
31" L \times 16" W \times 47" H
Weight
120 lbs avg
Process Module – 60 lbs
Cabinet base – 60 lbs

Operating environment

20°F to 100°F

MAIN FEATURES

- Eliminates H₂S and other odorous compounds
- Reduce or eliminate some forms of Fats, Oils, and Grease (FOG)
- Reduce or eliminate biofilm or bacterial growth in the treatment area
- Reduce the rate of corrosion typically associated with low pH
- Impart a residual oxidant to the defined space to absorb unexpected spikes of odors
- Removable Process Module for easy maintenance

DESCRIPTION

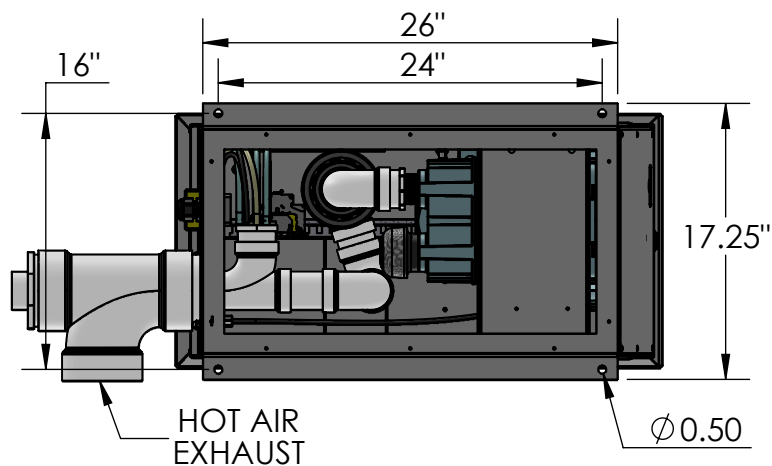
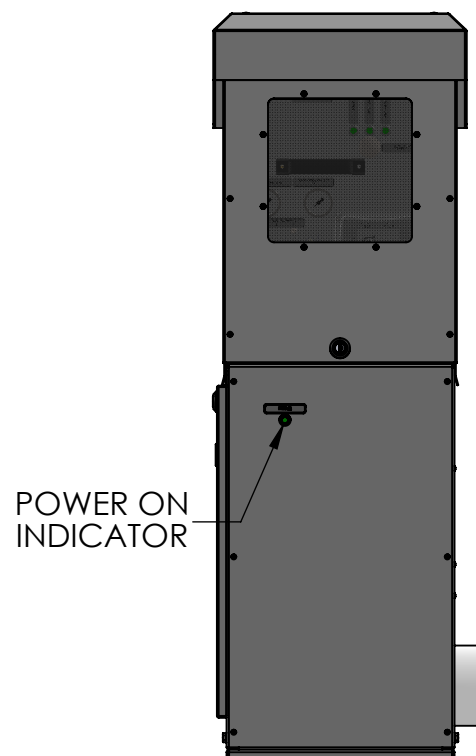
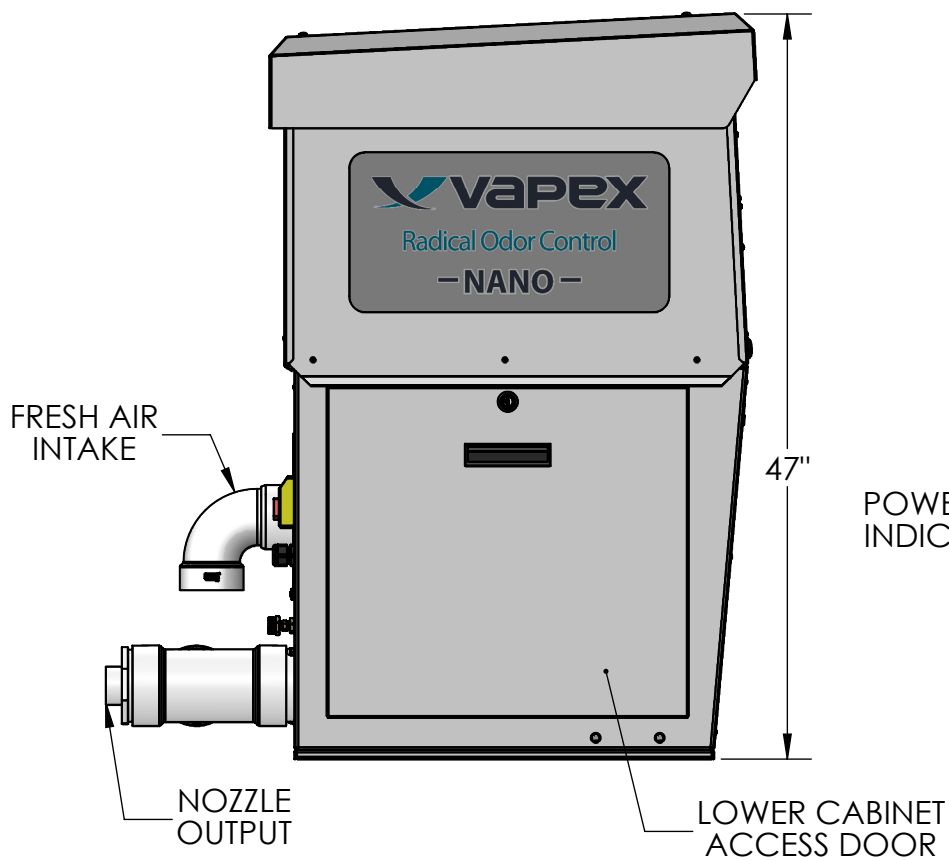
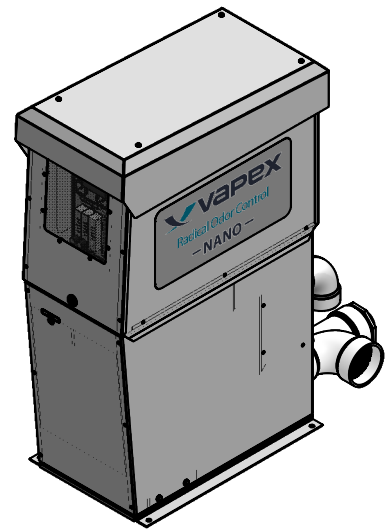
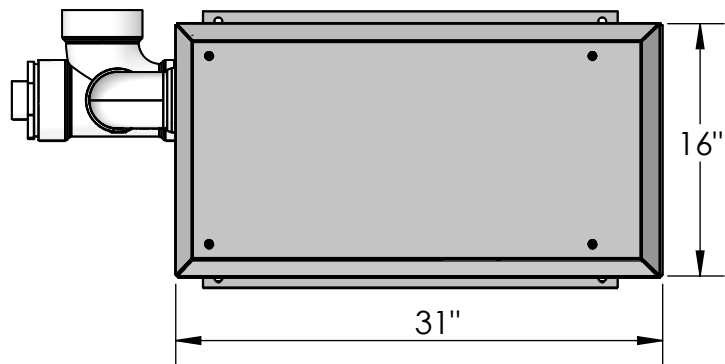
The Vapex Nano is an odor control system specifically designed to treat H₂S, mercaptans, amines, and other odorous compounds in enclosed spaces. It combines ozone, water, and air using a patented 3-fluid nozzle to atomize the water molecules to create hydroxyl radicals. The odorous air is not extracted instead the odors are treated at the same space where they are generated.

APPLICATIONS

- Lift Stations/Pump Stations
- Wet Wells
- Holding Tanks
- Headworks
- Covered Clarifiers

CONTACT INFORMATION

- Contact your local Vapex rep
- Call Vapex – 407-977-7250
- Email Vapex – Info@vapex.com



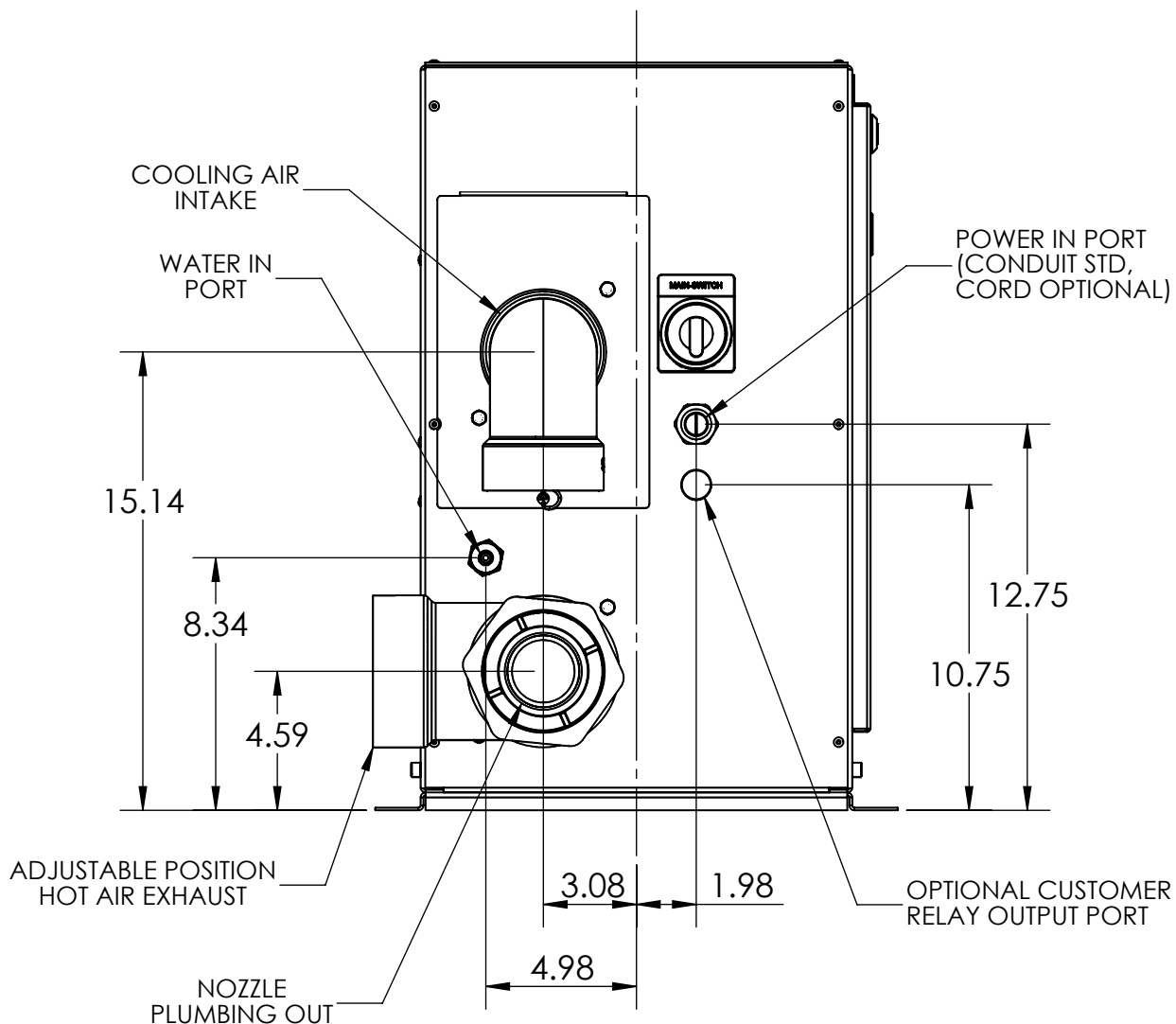
"XL" CONFIG SHOWN




NANO CABINET ASSEMBLY

SIZE DWG. NO.

A



NOTE:
NOZZLE PLUMBING OUT & HOT AIR EXHAUST CAN BE INTERCHANGED FOR BEST FIT. A 2" SWEEP ELBOW IS PROVIDED THAT FITS INSIDE THE 4" TEE FOR THIS OPTION.

PROPRIETARY AND CONFIDENTIAL	DIMENSIONS ARE IN INCHES TOLERANCES: FRACTIONAL ± 1/32 ANGULAR: MACH ±.25 BEND ±.5° TWO PLACE DECIMAL ±.01 THREE PLACE DECIMAL ±.005		NAME	DATE	 NANO LOWER CABINET PORT POSITIONS		
			DRAWN	JTD		7/15	
			CHECKED				
			ENG APPR.				
			MFG APPR.				
			Q.A.				
THE INFORMATION CONTAINED IN THIS DRAWING IS THE SOLE PROPERTY OF VAPEX, INC. ANY REPRODUCTION IN PART OR AS A WHOLE WITHOUT THE WRITTEN PERMISSION OF VAPEX, INC IS PROHIBITED.	MATERIAL	COMMENTS:					
	FINISH						
	DO NOT SCALE DRAWING						
		SIZE A	DWG. NO.	REV.	SCALE: 1:6	WEIGHT:	SHEET 1 OF 1